

The Installation Process

Thank you for your registration of **SATlive**.
Please read this document carefully.

Install the basic – key

With your registration e-mail you received a zip file, containing this two files:

- **New-XXX.dkf** Dual key file. XXX stands for your user name.
- **ReadMe.pdf** this pdf document.



Perform this steps to load the key file.

1. Expand the contents of the zip file to your computer.
2. Backup the file. You'll need it if you want to move the license.
3. Make sure that **SATlive** is **not** running
4. Navigate to the folder where you've expanded the files to.
5. Double click on the **NEW-XXX.dkf** file. XXX stands for your user name. Now **SATlive** will start up and installation will start automatically.

After the installation of the basic – key SATlive will **run for ten days**.

You need to personalize SATlive on your computer during this periode.

Personalize your computer

Request the full – key

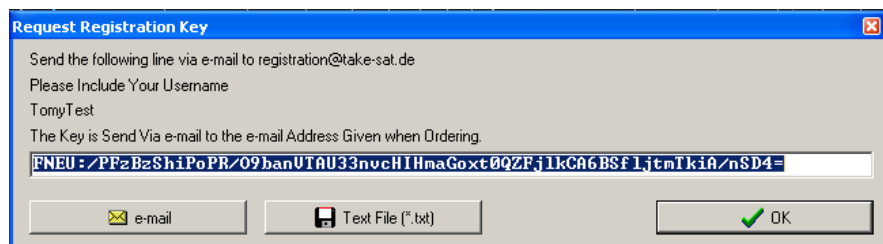
Perfrom this step **on the computer intended to be used with SATlive**.

Start **SATlive** and navigate to the **Registration** → **Full Version** → **Request Full Key** entry in the menu **Help** in the upper menu – area.

This opens a smaller window containing the information which you have to e-mail to registration@satlive.audio to get your personalized key.

There are three ways to send the data:

- Use the **e-mail** button, which prepares an email¹ containing the information.
- Use **copy&paste** to copy the basic-key into an e-mail. Please include your user – name also. The user – name is also shown in the window.
- Use the **Text File** button to store the information into a text file. If you can't send e – mails from the machine **SATlive** runs on, use the file for transfer the information. Transfer the file to a computer with email access and attach it to an email addressed to registration@satlive.audio



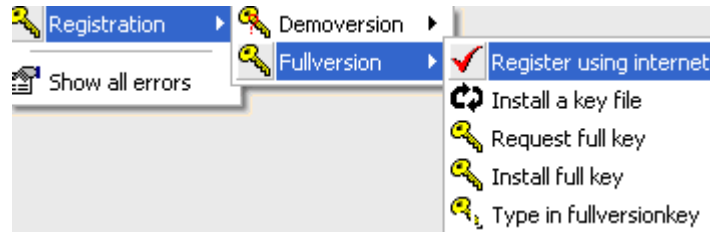
¹ To perform this action, SATlive invokes your e-mail software. You'll need to send the e-mail using the functions of your e-mail software. SATlive will not transfer any data directly.

Install the license file

As response to your request, you'll get an other e-mail, with an attachment containing the key for your computer. *This key will work only on the computer on which you've created the basic key.*

Install this file by performing this steps:

1. Copy the key file to the computer.
2. Start **SATlive**
3. In the menu **Help** navigate to **Registration** → **Full Version** → **Install Full Key**.
4. A file selection dialog will show up. Select the file and press **OK**.
5. **SATlive** will show a confirmation message and will restart to complete the registration.

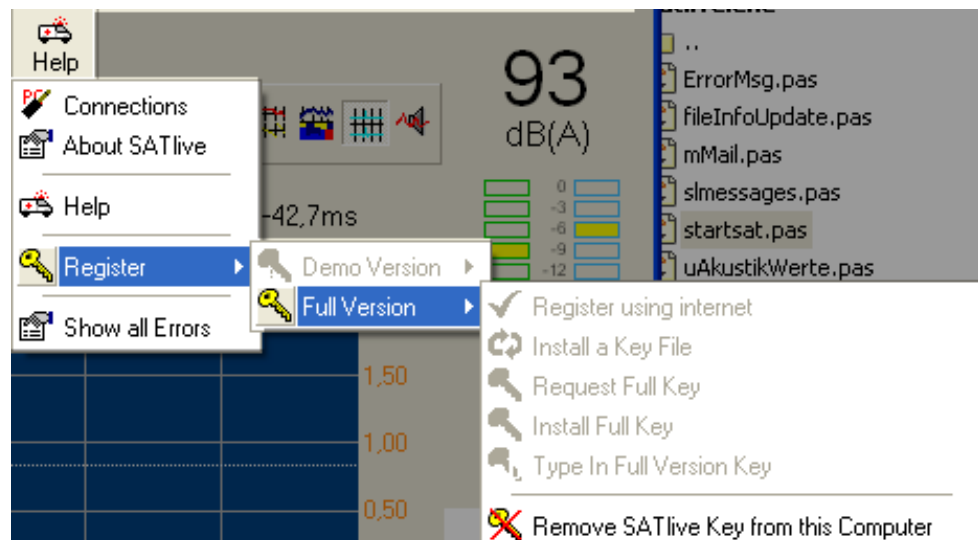


Transfer the license to an other computer

Copy the Dual-Key-File to the new computer.

The dual-key-file, which you got in the email after your order is needed on the new computer also. The dual-key-file has the extension DKF and its name starts with 'NEW-' and contains your name given for registration. Transfer this file to your new computer.

Run the Remove SATlive Key from this Computer function



You'll find this function in the sub-menu *Registration* accessible in the menu *Help*, located in the top menu bar.

Running this function will remove your license from this computer and will create an deinstallation key, which you need to request a new full – license key.

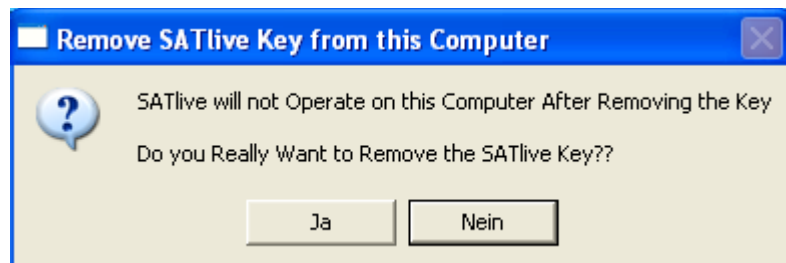
Confirm that you want to remove the license from this computer

Proceeding will remove the license from this computer, and SATlive will not run on it anymore.

It will not be possible to activate the license again using your old license data.

Therefore **SATlive** asks you if you really want to remove the license.

If you're sure, click on YES, otherwise click on NO to exit.



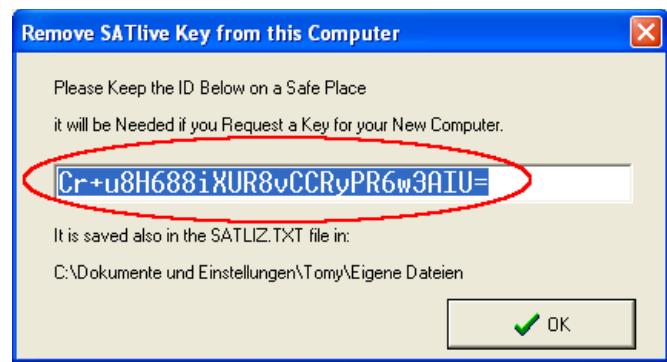
Store the deinstallation code

When the removal process is completed, **SATlive** calculates a special code which proves the removal of the license.

You'll need that code for the request of a new license code.

You can either copy & paste the code to a text file, or use the SATLIZ.TXT file.

You can find the full file name of that file in the bottom line of the window.



Create a license – request on the new computer

To activate the license on your new computer follow the steps described in the section *The Installation Process* (starting on page 1).

Add your deinstallation code to the e – mail request of the full – key.

Hints

- **Store a copy of the NEW-XXX.DKF file in a save place.** You'll need this file for any reactivation of your license.
- In case of doubt or trouble feel free to contact us via e – mail (info@satlive.audio)