


## The Installation Process

Thank you for your registration of **SATlive**.  
Please read this document carefully.

### Install the basic – key

With your registration e-mail you received a zip file, containing this two files:

- **New-XXX.dkf** Dual key file. XXX stands for your user name.  NEW-TOMYTEST.DKF
- **ReadMe.pdf** this pdf document.

Perform this steps to load the key file:

1. Expand the contents of the zip file to your computer.
2. Backup the file. You'll need it if you want to move the license.
3. Make sure that **SATlive** is **not** running
4. Navigate to the folder where you've expanded the files to.
5. Double click on the **NEW-XXX.dkf** file. XXX stands for your user name. Now **SATlive** will start up and installation will start automatically.

After the installation of the basic – key SATlive will **run for ten days**.

You need to **personalize SATlive on your computer** during this periode.

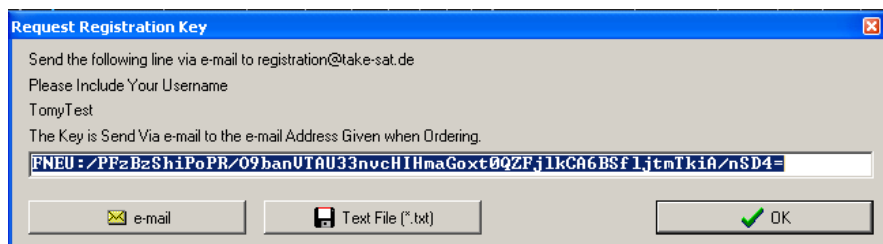
### Personalize your computer

#### Request the full – key

Perfrom this step **on the computer intended to be used with SATlive**.

Start **SATlive** and navigate to the **Registration** → **Full Version** → **Request Full Key**

entry in the menu **Help** in the upper menu – area. This will open a smaller window containing the information which you have to e-mail to



[registration@satlive.audio](mailto:registration@satlive.audio)

to get your personalized key. There are three ways to send the data:

- Use the **e-mail** button, which prepares an email<sup>1</sup> containing the information.
- Use **copy&paste** to copy the basic-key into an e-mail. Please include your user – name also. The user – name is also shown in the window.
- Use the **Text File** button to store the information into a text file. If you can't send e – mails from the machine **SATlive** runs on, use the file for transfer the information. Transfer the file to a computer with email access and attach it to an email addressed to [registration@satlive.audio](mailto:registration@satlive.audio)

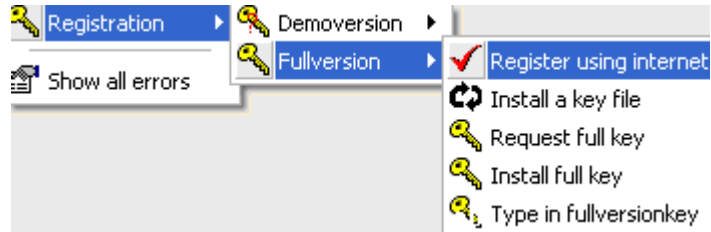
<sup>1</sup> To perform this action, SATlive invokes your e-mail software. You'll need to send the e-mail using the functions of your e-mail software. SATlive will not transfer any data directly.

**Install the license file**

As response to your request, you'll get an other e-mail, with an attachment containing the key for your computer. *This key will work only on the computer on which you've created the basic key.*

Install this file by performing this steps:

1. Copy the key file to the computer.
2. Start **SATlive**
3. In the menu **Help** navigate to **Registration** → **Full Version** → **Install Full Key**.
4. A file selection dialog will show up. Select the file and press **OK**.
5. **SATlive** will show a confirmation message and will restart to complete the registration.

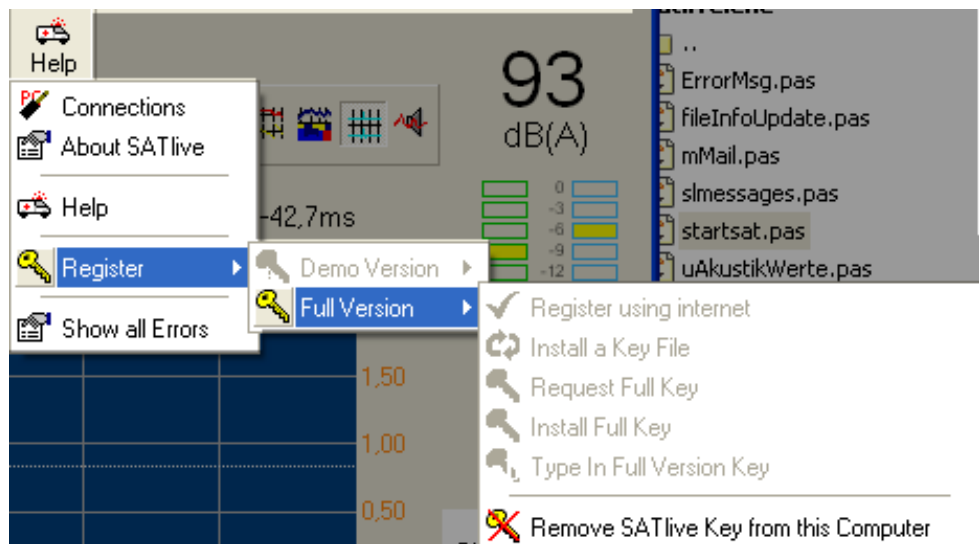


**Transfer the license to an other computer**

**Copy the Dual-Key-File to the new computer.**

The dual-key-file, which you got in the email after your order is needed on the new computer also. The dual-key-file has the extension DKF and its name starts with 'NEW-' and contains your name given for registration. Transfer this file to your new computer.

**Run the Remove SATlive Key from this Computer function**



You'll find this function in the sub-menu *Registration* accessible in the menu *Help*, located in the top menu bar.

Running this function will remove your license from this computer and will create an *proof of removal* key, which you need to request a new full – license key.

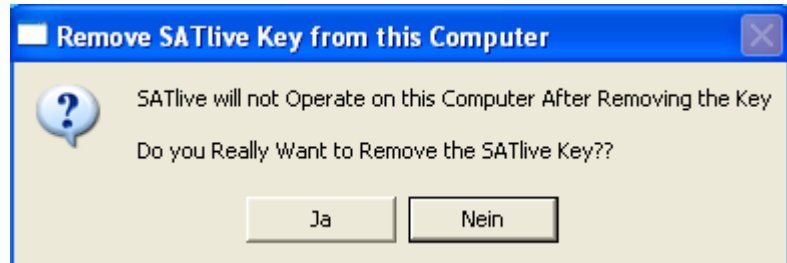
**Confirm that you want to remove the license from this computer**

**Proceeding will remove the license from this computer, and SATlive will not run on it anymore.**

**It will not be possible to activate the license again using your old license data.**

Therefore **SATlive** asks you if you really want to remove the license.

If you're sure, click on YES, otherwise click on NO to exit.



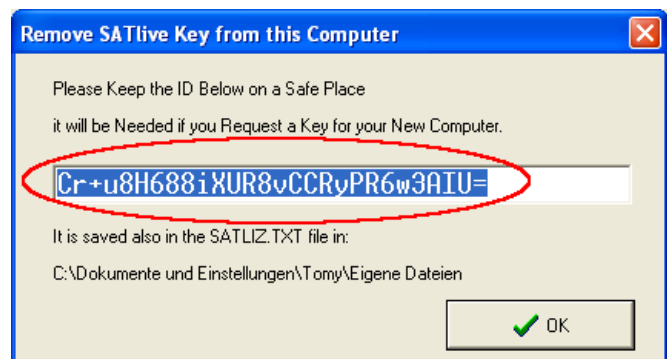
### **Store the proof of removal code**

When the removal process is completed, **SATlive** calculates a special code which proves the removal of the license.

You'll need that code for the request of a new license code.

You can either copy & paste the code to a text file, or use the SATLIZ.TXT file.

You can find the full file name of that file in the bottom line of the window.



### **Create a license – request on the new computer**

To activate the license on your new computer follow the steps described in the section *The Installation Process* (starting on page 1).

Add your deinstallation code to the e – mail request of the full – key.

### **Hints**

- **Store a copy of the NEW-XXX.DKF file in a save place.** You'll need this file for any reactivation of your license.
- **Do not create more than one key – request. Creation of a new key – request will void any previous request.**
- In case of doubt or trouble feel free to contact us via e – mail ([info@satlive.audio](mailto:info@satlive.audio))